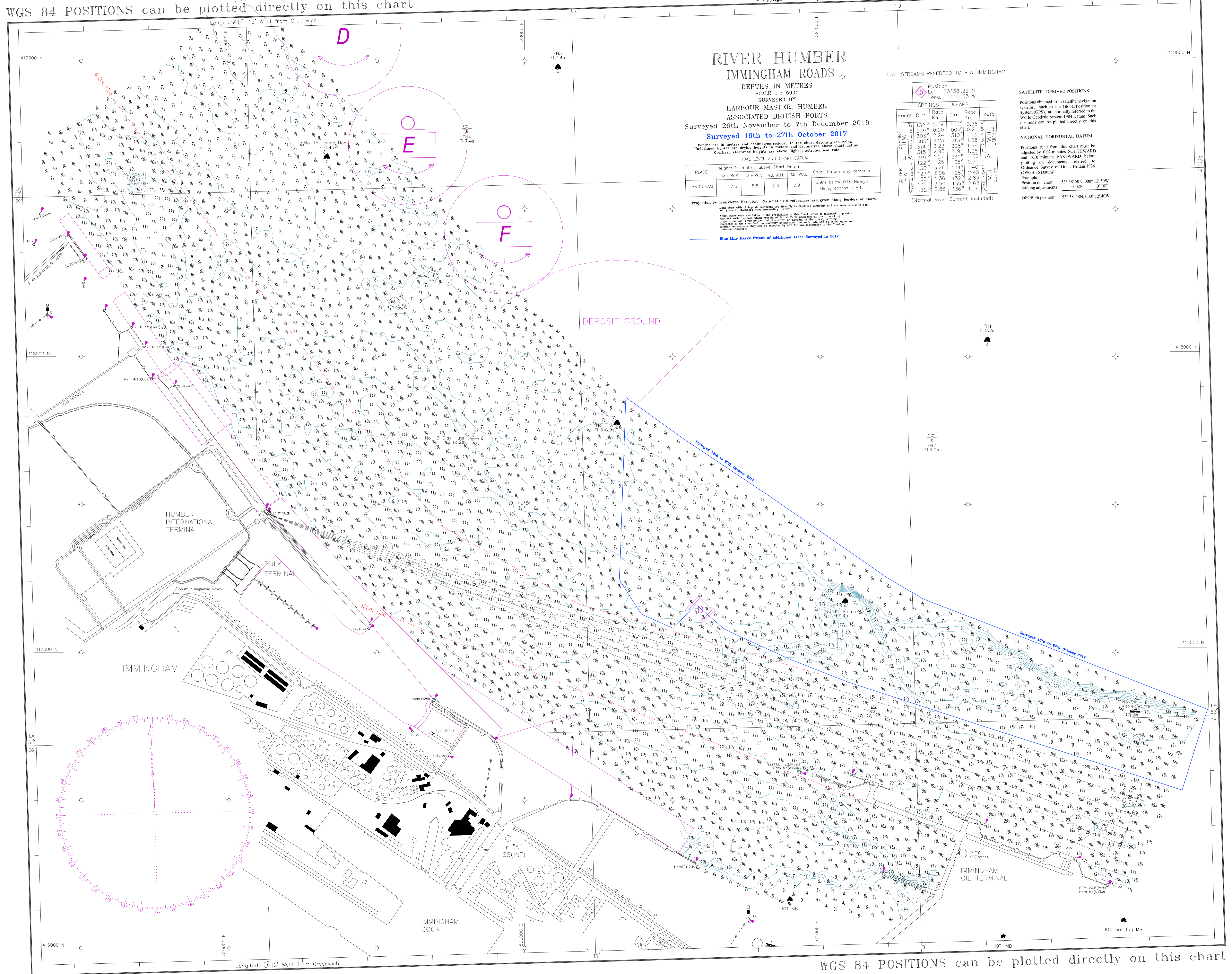


WGS 84 POSITIONS can be plotted directly on this chart

© Copyright 2018. All rights reserved. No part of this product may be reproduced in any form (including photocopying or by electronic means) without prior permission.



# RIVER HUMBER IMMINGHAM ROADS

DEPTHS IN METRES  
SCALE 1 : 5000  
SURVEYED BY  
HARBOUR MASTER, HUMBER  
ASSOCIATED BRITISH PORTS  
Surveyed 26th November to 7th December 2018  
Surveyed 16th to 27th October 2017

Depths are in metres and decimetres reduced to the chart datum given below  
Underlined figures are drying heights in metres and decimetres above chart datum  
Overhead clearances are above Highest Astronomical Tide

TIDAL LEVEL AND CHART DATUM

PLACE	M.H.W.S.	M.H.W.N.	M.L.W.N.	M.L.W.S.	Chart Datum and remarks
IMMINGHAM	7.3	5.8	2.6	0.9	3.9m below O.D. Newlyn Being approx. L.A.T.

TIDAL STREAMS REFERRED TO H.W. IMMINGHAM

Position Lat. 53° 38' 22" N Long. 0° 10' 65" W	SPRINGS		NEAPS		Hours
	Dirn	Rate	Dirn	Rate	
BEFORE H.W.	132°	2.59	106°	0.76	BEFORE H.W.
	239°	0.20	004°	0.21	
	303°	2.24	310°	1.13	
	314°	3.23	313°	1.68	
AFTER H.W.	315°	2.95	319°	1.06	AFTER H.W.
	319°	1.27	341°	0.30	
	122°	1.25	135°	0.70	
	133°	3.26	134°	1.40	
BEFORE H.W.	129°	3.96	128°	2.43	BEFORE H.W.
	132°	4.36	132°	2.83	
	135°	3.50	135°	2.82	
	132°	2.86	136°	1.56	

(Normal River Current Included)

**SATELLITE - DERIVED POSITIONS**  
Positions obtained from satellite navigation systems, such as the Global Positioning System (GPS), are normally referred to the World Geodetic System 1984 Datum. Such positions can be plotted directly on this chart.

**NATIONAL HORIZONTAL DATUM**  
Positions read from this chart must be adjusted by 0.02 minutes SOUTHWARD and 0.10 minutes EASTWARD before plotting on documents referred to Ordnance Survey of Great Britain 1936 (OSGB 36 Datum).  
Example:  
Position on chart 53° 38' 50N, 000° 12' 50W  
lat/long adjustments 0' 02S 0' 10E  
OSGB 36 position 53° 38' 48N, 000° 12' 40W

Projection - Transverse Mercator. National Grid references are given along borders of chart.  
Light waves without legends represent red flag lights displayed vertically and are seen as red to red and green to starboard when proceeding upriver.  
Blue line marks extent of additional areas surveyed in 2017.

WGS 84 POSITIONS can be plotted directly on this chart